



Bill Burnett Drive MTP Amendment

3/15/2022

Capital Improvement Department

Request to amend MTP

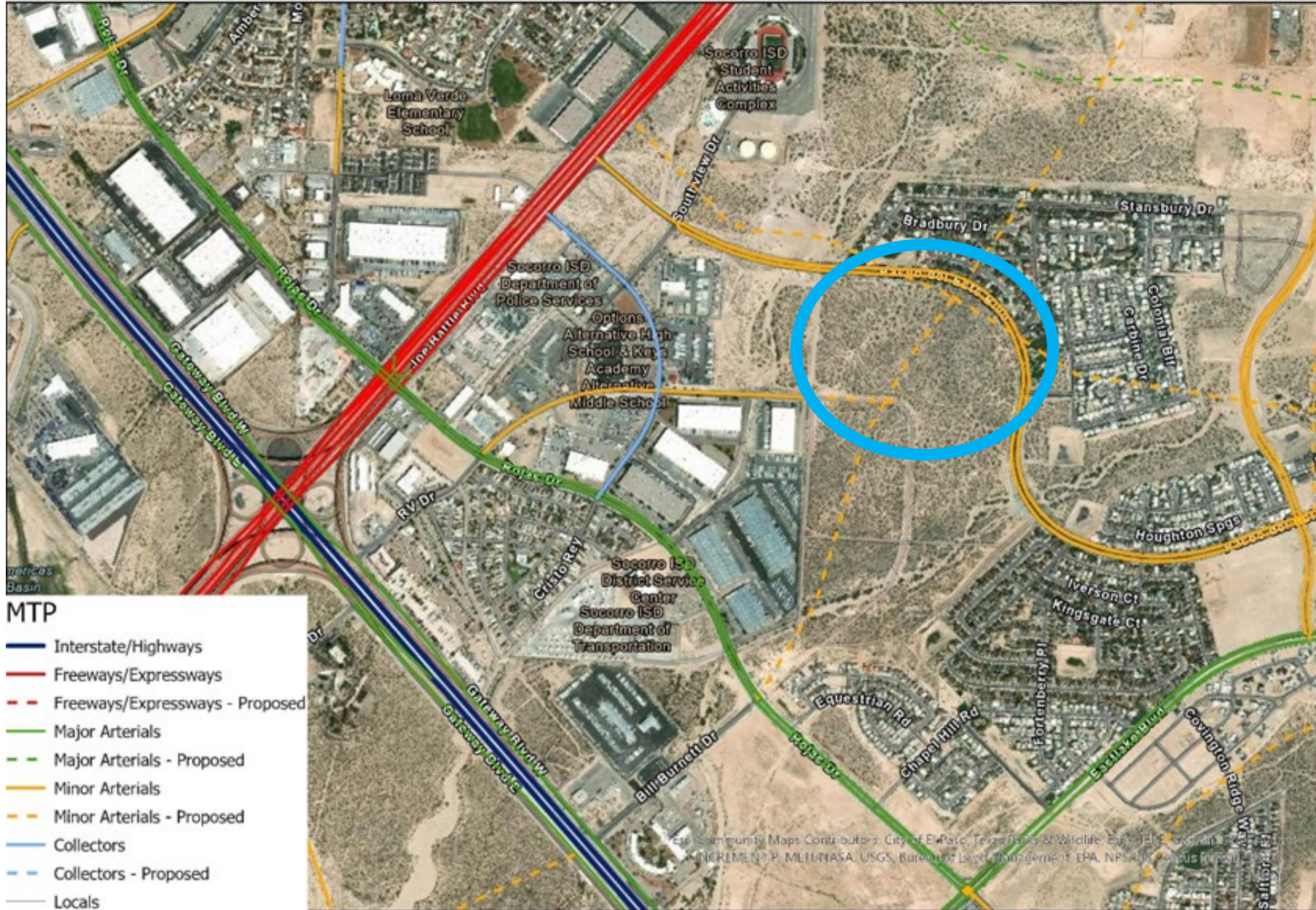
- Delete the north/south extension of Bill Burnett Drive from Mercantile to Paseo Del Este, retain the north/south connection of Bill Burnett Drive from Rojas to Mercantile.
- CPC Approval recommendation 2-10-2022

Major Thoroughfare Plan

Existing 2025 Proposed Thoroughfare System



Major Thoroughfare Plan Existing 2025 Proposed Thoroughfare System



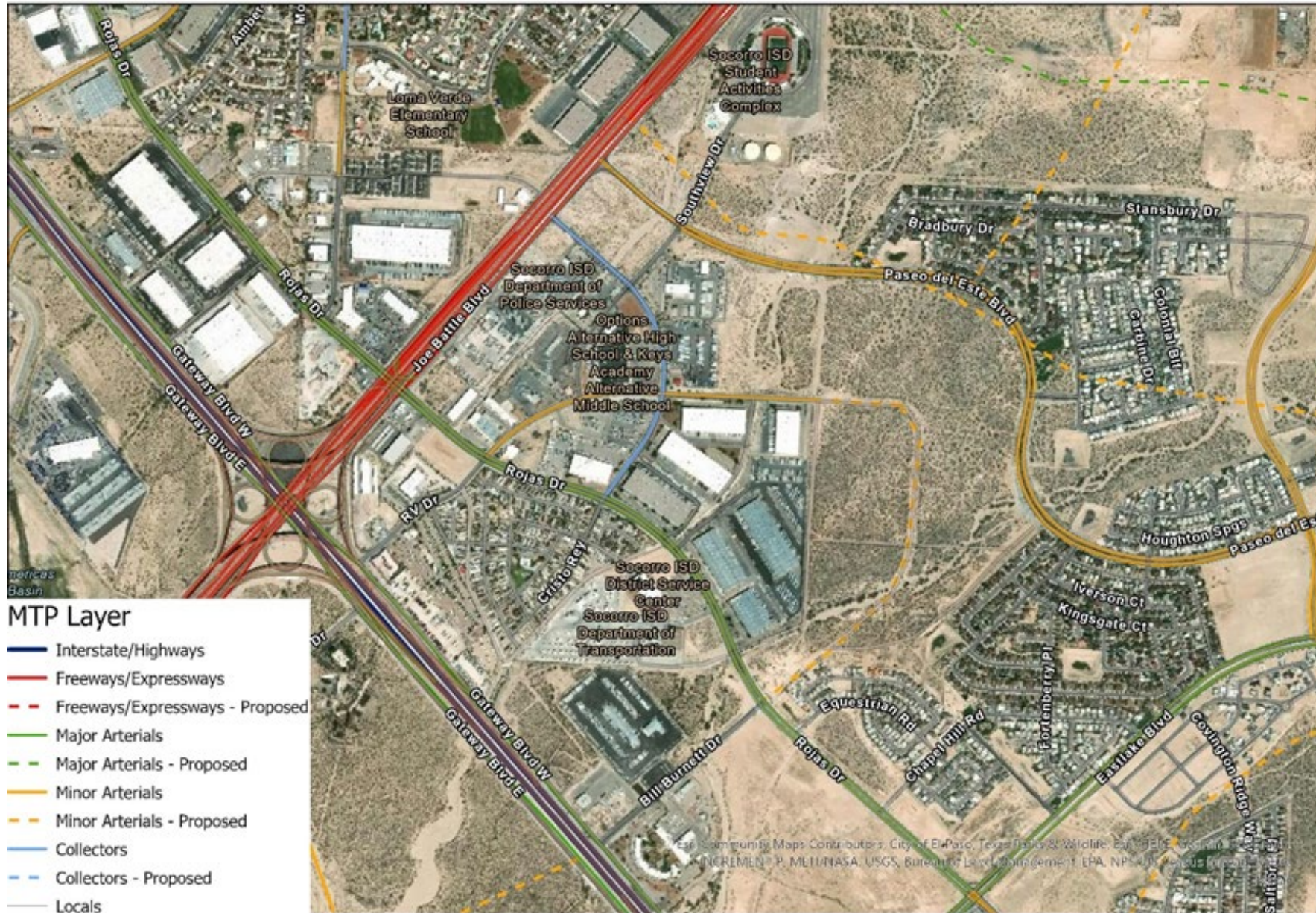
Major Thoroughfare Plan

Requested 2025 Proposed Thoroughfare System



Major Thoroughfare Plan

Requested 2025 Proposed Thoroughfare System



- The requested change is associated with a subdivision application approved conditionally by the City Plan Commission on August 12, 2021. Approval of this amendment will satisfy the condition of that approval.
- Bill Burnett drive is a minor arterial directly east of the city limits in the city's ETJ. The surrounding development is primarily industrial and institutional with adjacent single-family development typical of far east El Paso development patterns.
- Private and public development directly north of the proposed alignment prevents any future extension Bill Burnett Dr north of Paseo Del Este Blvd. As such, the connection would have minimal impact on the overall connectivity of the surrounding street network. Additionally, due to topography of the surrounding area, Paseo del Este Blvd was constructed in a highly non-linear alignment, which impedes the ability to locate a major intersection along its alignment.
- The Federal Highway Administration recommends an ideal spacing of 1 mile between arterial roadways in *fully developed* areas. Removing the north/south connection of Bill Burnett would result in a spacing of approximately 1.8 miles. However, due to the limited development potential of a large portion of the surrounding area based on deed restrictions and other large institutional property owners in the area, namely SISD, it is unlikely that the density in the area will ever necessitate the connection proposed for deletion.

After extensive coordination with reviewing departments, analysis of existing and trending development in the area, and consideration of the submitted traffic impact analysis staff recommends **approval** of the proposed MTP amendment.

MISSION



Deliver exceptional services to support a high quality of life and place for our community

VISION



Develop a vibrant regional economy, safe and beautiful neighborhoods and exceptional recreational, cultural and educational opportunities powered by a high performing government



VALUES

Integrity, **R**espect, **E**xcellence,
Accountability, **P**eople