



Transportation Alternative Set-Aside (TASA) Applications

September 27, 2022



Strategic Plan Goal:

7) Enhance and Sustain El Paso's Infrastructure Network

Program

Transportation Alternatives Set-Aside (TASA) program provides funding for projects and activities defined as **transportation alternatives** including:

- On- and off-road **pedestrian and bicycle facilities**
- Infrastructure projects for improving non-driver access to **public transportation** and **enhanced mobility**
- Community improvement activities
- Environmental mitigation, trails that serve a transportation purpose, and **safe routes to school projects**

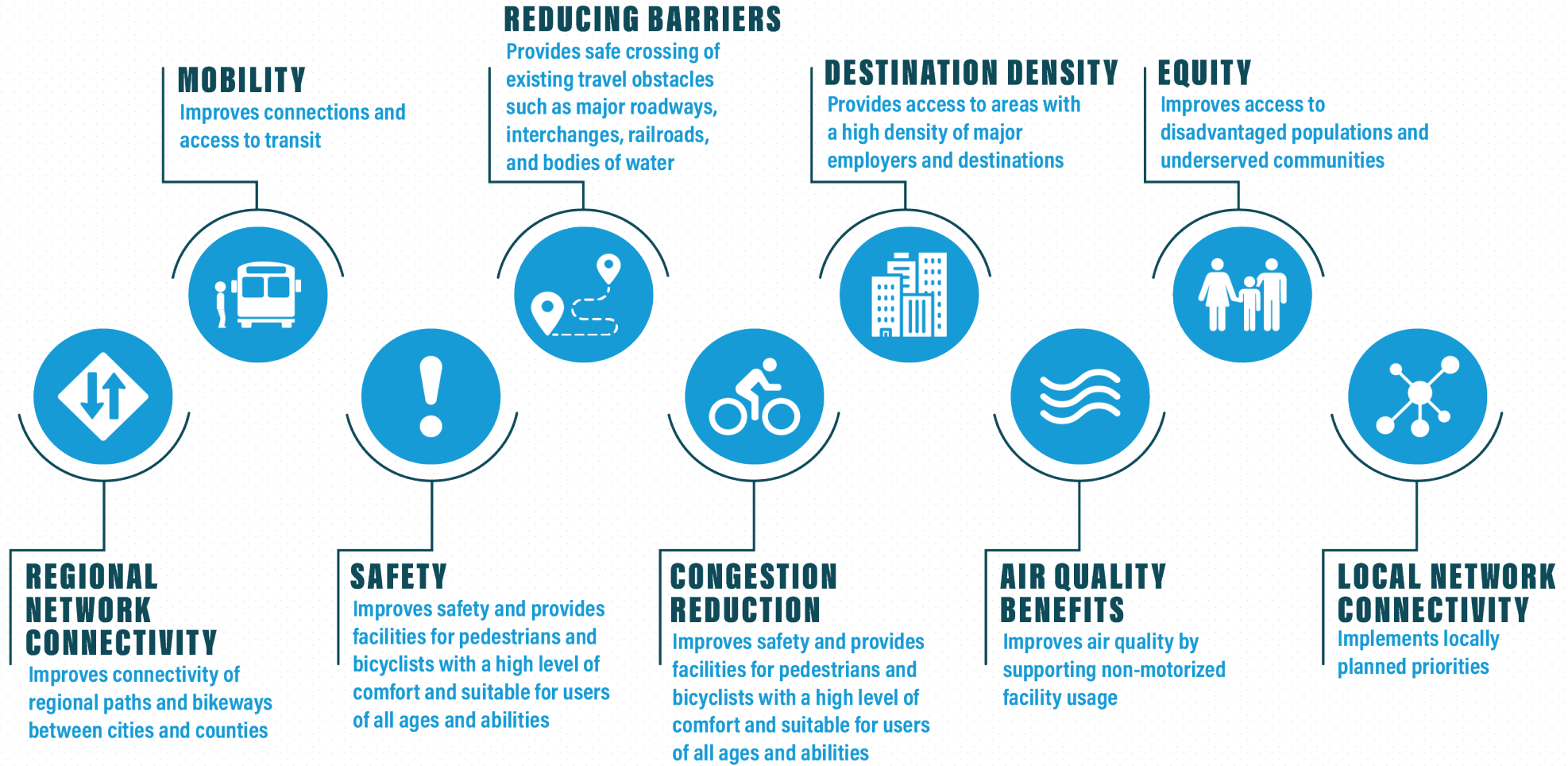
Eligibility

Facilities for Active Transportation (Pedestrians and Bicycles)

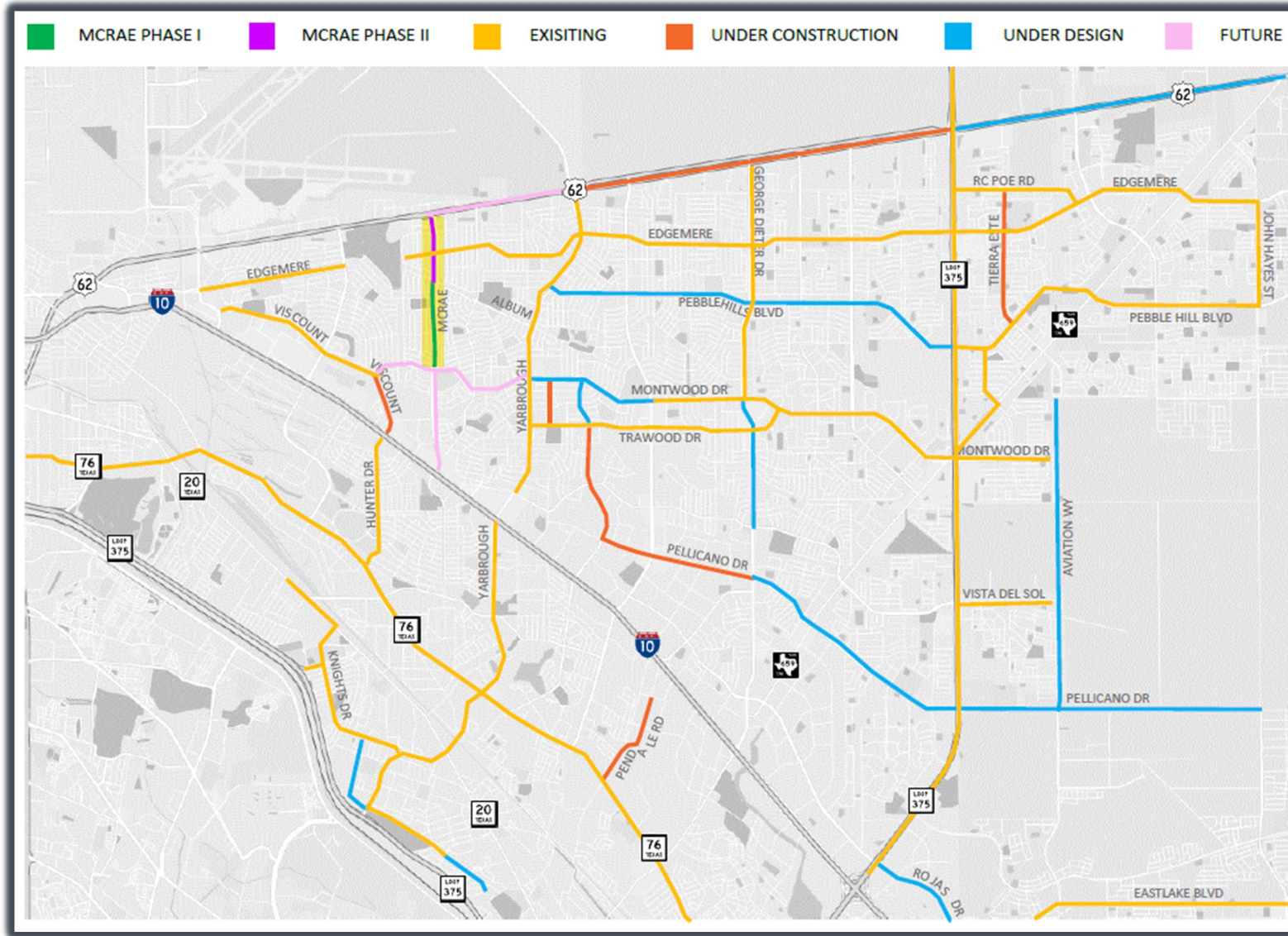
Active transportation projects are those that make non-motorized transport safe, convenient, and appealing. Such projects eligible for TA Set-Aside Program funding include the following activities:

- a) **Construction**, planning, and design of on-road and off-road trail facilities for pedestrians, bicyclists, and other non-motorized forms of transportation, including sidewalks, **bicycle infrastructure, pedestrian and bicycle signals, traffic-calming techniques, lighting** and other safety-related infrastructure, and transportation projects to achieve compliance with the **Americans with Disabilities Act** of 1990 (42 U.S.C. 12101 et seq.).
- b) Construction, planning, and design of infrastructure-related projects and systems that will provide **safe routes** for non-drivers, including children, older adults, and individuals with disabilities to access daily needs.
- c) Conversion and use of abandoned railroad corridors for trails for pedestrians, bicyclists, or other non-motorized transportation users.

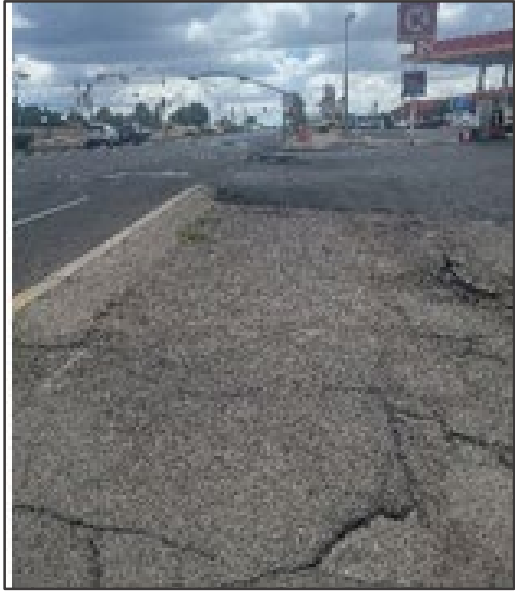
Criteria



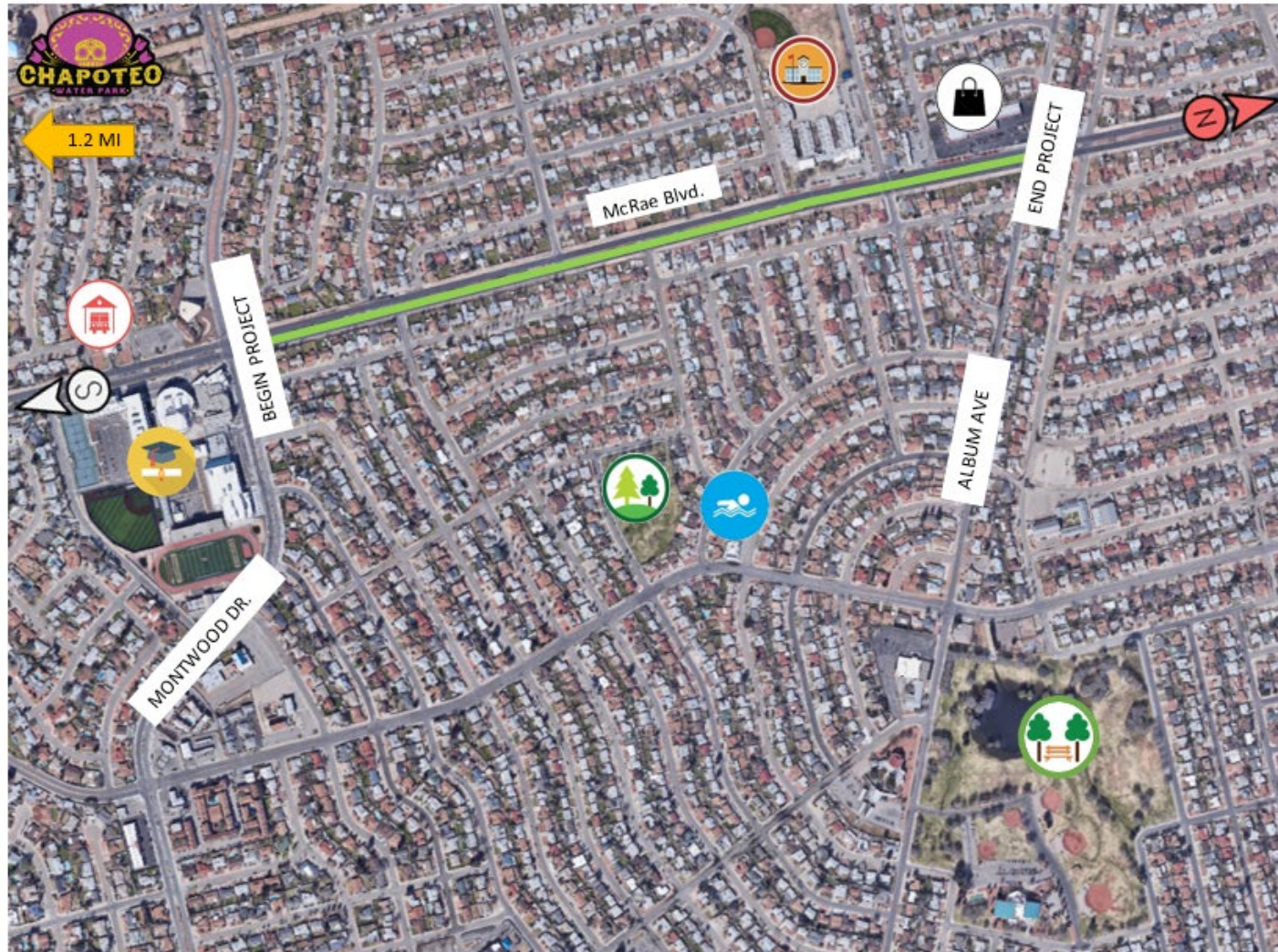
COEP Bike Plan



Current Conditions



Project Location – Ph I Montwood to Album



Project Limits:

Along: Southbound Lanes on McRae Dr.

Start Location: Montwood Dr. Intersection

End Location: Album Ave. Intersection

Total Length: 4,632 FT

- Project Area
- Scotsdale Elementary School
- Eastwood Highschool
- Album Park
- Album Park
- Eastwood Heights Swimming
- Fire Station 19
- Eastwood Shopping Center
- Chapoteo water park

Project Location – Ph II Album to Montana



Project Limits:

Along: Southbound Lanes on McRae Dr.

Start Location: Album Ave. Intersection

End Location: Montana Ave. Intersection

Total Length: 3,367FT

- Project Area
- Scotsdale Elementary School
- Album Park
- Cork Park
- Suffolk Park
- Tyrone Park
- Taco Bell
- Whataburger
- All Saints Episcopal Church
- Montwood Shopping Center
- Shopping Center
- WM Beauty Salon
- Lone Star Golf Club
- Sun Metro Transit Operation Center

Project Scope

McRae Shared Use Path

- Projects would include:
 - Pedestrian and bicycle path with signage
 - Landscaping
 - ADA curb ramps
 - Solar powered bollard lighting



Amount and Source of Funding

McRae Shared Use Path Montwood to Album

- Estimated total project cost: \$2.1M
- Estimated Federal participation amount requested \$1.4M
- Estimated **City participation** amount of **\$720,000**
- **FY 2024**

McRae Shared Use Path Album to Montana

- Estimated total project cost: \$1.9M
- Estimated Federal participation amount requested \$1.25M
- Estimated **City participation** amount of **\$650,000**
- **FY 2025**



THANK YOU