



**Ordinance Amending Title 12.88.010
Schedule I – One-Way Streets & Title
12.88.030 Schedule III – Parking
Prohibited At All times – West Main
Drive (Westbound from El Paso Street to
Santa Fe Street)**

Streets and Maintenance Department
Joshua E. Lerma, Planner
September 24, 2024

Goal 7 – Enhance and Sustain El Paso’s Infrastructure Network

Sub-goal 7.3 – Enhance a regional comprehensive transportation system



Grand Opening August 10, 2024



NUBE
STEAM DISCOVERY CENTER

201 W. Main Drive
El Paso, Texas 79901

Streets and Maintenance Dept.

Ordinance Amending Title 12.88.010 Schedule I – One-Way Streets

Purpose of Amendment

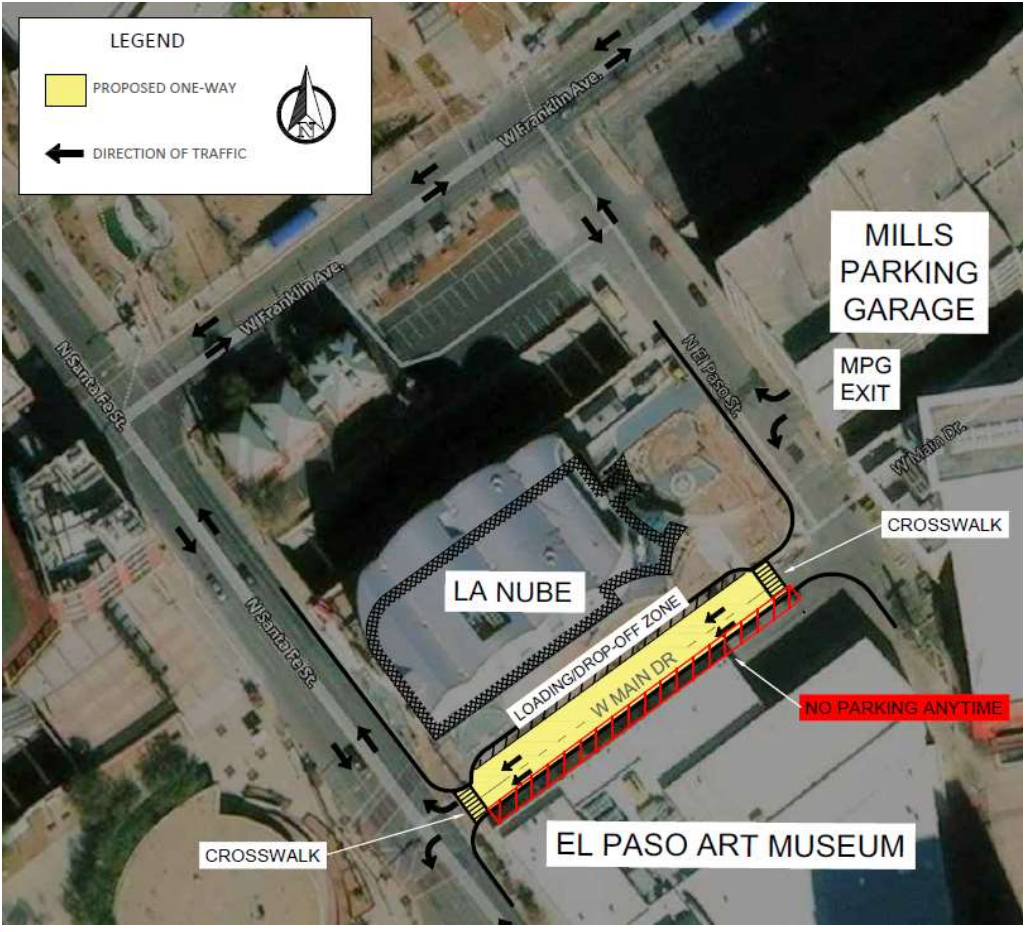
- Accommodate bus drop-off at La Nube entrance on W Main Drive
- Maintain delivery conveyance and EMS vehicular access
- Allow efficient discharge of vehicles from Mills Parking Garage
- Minimize traffic congestion along connecting street network
- Safer pedestrian crossing

Streets and Maintenance Dept.

Ordinance Amending Title 12.88.030 Schedule III – Parking Prohibited At All Times

Purpose of Amendment

- Maintain clearance
- Maintain traffic flow
- Drop-off relocated to north-side of W Main Drive



North Side of W Main Dr:
No Stopping or Standing,
Passenger Loading Zone



South Side of W Main Dr:
No Parking Any Time

Streets and Maintenance Department

Ordinance Amending Title 12.88.010

Requested Council Action:

AN ORDINANCE AMENDING TITLE 12 (VEHICLES AND TRAFFIC), CHAPTER 12.88 (SCHEDULES), SECTION 12.88.010 (SCHEDULE I – ONE-WAY STREETS),

SECTION 1. Amend Title 12 (Vehicles and Traffic), Chapter 12.88 (Schedules), Section 12.88.010 (Schedule One-Way Streets), to Add Item

97. W Main Drive Westbound from El Paso Street to N Santa Fe Street

Streets and Maintenance Department

Ordinance Amending Title 12.88.030

Requested Council Action:

AN ORDINANCE AMENDING TITLE 12 (VEHICLES AND TRAFFIC), CHAPTER 12.88 (SCHEDULES), SECTION 12.88.030 (SCHEDULE III – PARKING PROHIBITED AT ALL TIMES ON CERTAIN STREETS),

SECTION 1. Amend Title 12 (Vehicles and Traffic), Chapter 12.88 (Schedules), Section 12.88.030 (Schedule III – Parking Prohibited at all Times on Certain Streets), to Add Item

388. W Main Drive from El Paso Street to N Santa Fe Street, south side;

MISSION



Deliver exceptional services to support a high quality of life and place for our community.

VISION



Develop a vibrant regional economy, safe and beautiful neighborhoods and exceptional recreational, cultural and educational opportunities powered by a high performing government.



VALUES

Integrity, **R**espect, **E**xcellence,
Accountability, **P**eople

MISIÓN



Brindar servicios excepcionales para respaldar una vida y un lugar de alta calidad para nuestra comunidad

VISIÓN



Desarrollar una economía regional vibrante, vecindarios seguros y hermosos y oportunidades recreativas, culturales y educativas excepcionales impulsadas por un gobierno de alto desempeño



VALORES

Integridad, Respeto, Excelencia,
Responsabilidad, Personas