



ITEM 9

WinterFest 2024 Lights Parade

CSEV24-00081

Strategic Goal 4.

Enhance El Paso's quality of life through recreational, cultural and educational



Background

State Right-of-Way Impacted:

Mesa St. between Franklin Ave. and Overland St.
Texas Ave. between Oregon St. and Octavia St.

Parade Date and Time:

Saturday, November 23, 2024, at 6:00 p.m. to 8:00 p.m.

Traffic Control Dates and Times:

Saturday, November 23, 2024 12:00 p.m. to 11:00 p.m.

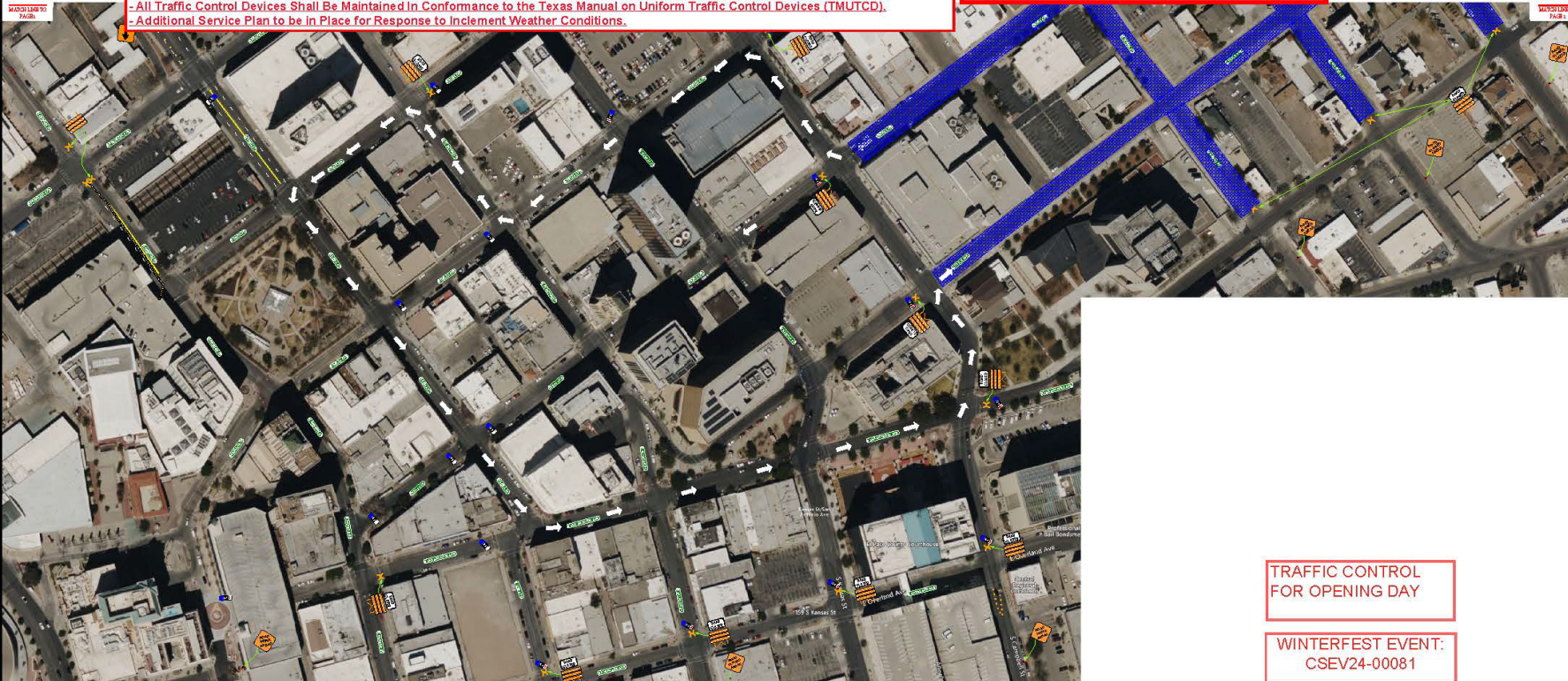
Traffic Control Plan

NOTES:

- The Traffic Control Procedure Shown is Appropriate Only for Low Volume, Low Speed Facilities, Such as Local Residential Streets.
- Flashing Warning Lights & Retro-reflective Strips Will Be Used for Night Time Barricading.
- Additional CV20-5R Signs and/or Barrels May Be Needed for High Volume, High Speed Urban Streets.
- All Traffic Control Devices Shall Be in Conformance to the Texas Manual on Uniform Traffic Control Devices (TMUTCD).
- Flagmen Must be Present on Each Construction Site Anytime Equipment is Being Operated on or is Impeding Into Roadway or Sidewalk Area.
- Sidewalks to be Closed Per Approved Methods Anytime Work is Impeding Into or Over the Travel Path.
- All Traffic Control Devices Shall Be Maintained in Conformance to the Texas Manual on Uniform Traffic Control Devices (TMUTCD).
- Additional Service Plan to be in Place for Response to Inclement Weather Conditions.

EL PASO STREETS & MAINTENANCE DEPARTMENT

APPROVED EXCEPT AS NOTED:
APPROVAL OF THIS DRAWING DOES NOT RELIEVE THE CONTRACTOR OF THE RESPONSIBILITY FOR THE CORRECTNESS OF DETAIL AS PER THE TEXAS MUTCD.



TRAFFIC CONTROL FOR OPENING DAY
 WINTERFEST EVENT: CSEV24-00081

EPTC24-03504
TRAFFIC CONTROL PLAN
 SHALL COMPLY WITH THE LATEST EDITION OF THE TEXAS MANUAL OF UNIFORM TRAFFIC CONTROL DEVICES
ONE DAY PERMIT UNLESS NOTED
 CLOSURE DATE: 11/23/24
 TIME: 12PM-11PM
 BY: *[Signature]* DATE: 10/07/2024
 CITY OF EL PASO STREETS AND MAINTENANCE

TRAFFIC CONTROL PLAN
 WINTERFEST PARADE & BARRICADE

TCP PREPARED BY: OMAR J GUEVARA, TCDS
 APACHE BARRICADE & SIGN

POSTED SPEED	FORMULA	MIN. TAPER LENGTH			SUGGESTED MAX. DEVICE SPACING		MIN. SIGN SPACING X DISTANCE	SUGGESTED MINIMUM LONGITUDINAL BUFFER
		10' OFFSET	11' OFFSET	12' OFFSET	ON A TAPER	ON TANGENT		
30	L = WS ² / 60	150'	165'	180'	30'	60'	120'	200'
35		205'	225'	245'	35'	70'	160'	250'
40		265'	295'	320'	40'	80'	240'	305'
45	L = WS	450'	495'	540'	45'	90'	320'	360'
50		500'	550'	600'	50'	100'	400'	425'
55		550'	605'	660'	55'	110'	500'	495'
60		600'	660'	720'	60'	120'	*600'	570'
65		650'	715'	780'	65'	130'	*700'	645'
70	700'	770'	840'	70'	140'	*800'	730'	



PG 1 OF 2

WINTERFEST PARADE
 LOCATION: DOWNTOWN
 PROJECT: PARADE
 TTC: ROAD CLOSURE / LANE CLOSURES W/ DETOUR ROUTE

- NOTES:
 1. DRAWING NOT TO SCALE.
 2. MUST PROVIDE 10' MINIMUM PER TRAVEL LANE.

LEGEND

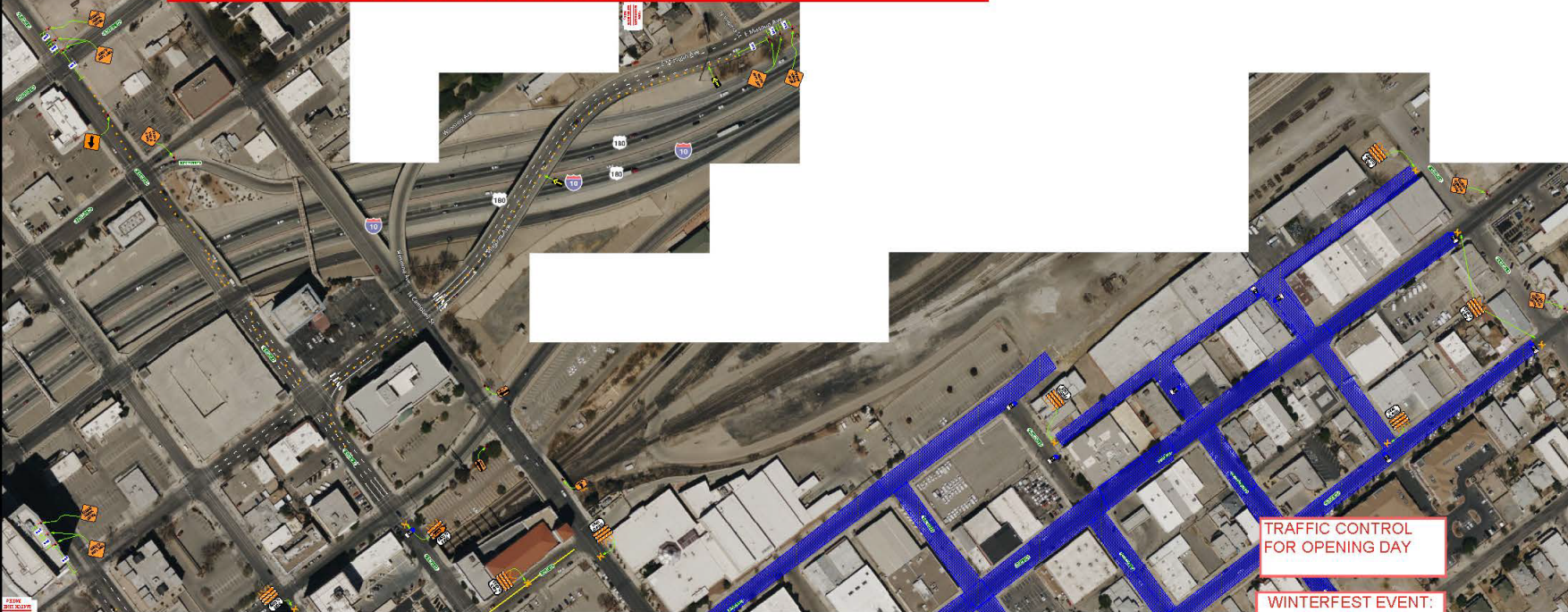
- = 24" CONE
- = ARROW BOARD
- = PD CRUISER
- = ROAD CLOSED UNLESS OTHERWISE

Traffic Control Plan

NOTES:

- The Traffic Control Procedure Shown is Appropriate Only for Low Volume, Low Speed Facilities, Such as Local Residential Streets.
- Flashing Warning Lights & Retro-reflective Strips Will Be Used for Night Time Barricading.
- Additional C/W20-5R Signs and/or Barrels May Be Needed for High Volume, High Speed Urban Streets.
- All Traffic Control Devices Shall Be in Conformance to the Texas Manual on Uniform Traffic Control Devices (TMUTCD).
- Flagmen Must be Present on Each Construction Site Anytime Equipment is Being Operated on or is Impeding into Roadway or Sidewalk Area.
- Sidewalks to be Closed Per Approved Methods Anytime Work is Impeding into or Over the Travel Path.
- All Traffic Control Devices Shall Be Maintained in Conformance to the Texas Manual on Uniform Traffic Control Devices (TMUTCD).
- Additional Service Plan to be in Place for Response to Inclement Weather Conditions.

EL PASO STREETS & MAINTENANCE DEPARTMENT
APPROVED EXCEPT AS NOTED:
APPROVAL OF THIS DRAWING DOES NOT RELIEVE THE CONTRACTOR OF THE RESPONSIBILITY FOR THE CORRECTNESS OF DETAILS AS PER THE TEXAS MUTCD.



TRAFFIC CONTROL FOR OPENING DAY

WINTERFEST EVENT: CSEV24-00081

EPTC24-03504
TRAFFIC CONTROL PLAN
 SHALL COMPLY WITH THE LATEST EDITION OF THE TEXAS MANUAL OF UNIFORM TRAFFIC CONTROL DEVICES
ONE DAY PERMIT UNLESS NOTED
 CLOSURE DATE: 1/7/24
 TIME: 12PM-11PM
 BY: *[Signature]* DATE: 10/07/2024
 © 2024 EL PASO STREETS AND MAINTENANCE

TCP PREPARED BY: OMAR J GUEVARA, TCDS
 APACHE BARRICADE & SIGN

PG 2 OF 2

POSTED SPEED	FORMULA	MIN. TAPER LENGTH			SUGGESTED MAX. DEVICE SPACING		MIN. SIGN SPACING	SUGGESTED MINIMUM LONGITUDINAL BUFFER
		10' OFFSET	11' OFFSET	12' OFFSET	ON A TAPER	ON TANGENT		
30	L = $\frac{VS^2}{60}$	150'	165'	180'	30'	60'	120'	200'
35		205'	225'	245'	35'	70'	160'	250'
40		265'	295'	320'	40'	80'	240'	305'
45		450'	495'	540'	45'	90'	320'	360'
50	L = WS	500'	550'	600'	50'	100'	400'	425'
55		550'	605'	660'	55'	110'	500'	495'
60		600'	660'	720'	60'	120'	*600'	570'
65		650'	715'	780'	65'	130'	*700'	645'
70		700'	770'	840'	70'	140'	*800'	730'



WINTERFEST PARADE
 LOCATION: DOWNTOWN
 PROJECT: PARADE
TTC: ROAD CLOSURE / LANE CLOSURES W/ DETOUR ROUTE

NOTES:
 1. DRAWING NOT TO SCALE.
 2. MUST PROVIDE 10' MINIMUM PER TRAVEL LANE.

LEGEND

- = 24" CONE
- = ARROW BOARD
- = PD CRUISER
- = ROAD CLOSED UNLESS OTHERWISE

Site Plan





Mission

Deliver exceptional services to support a high quality of life and place for our community



Vision

Develop a vibrant regional economy, safe and beautiful neighborhoods and exceptional recreational, cultural and educational opportunities powered by a high performing government



Values

Integrity, Respect, Excellence, Accountability, People