

Space reserved for the ASL
interpreter

Do not move, modify, or add
any information on this box.

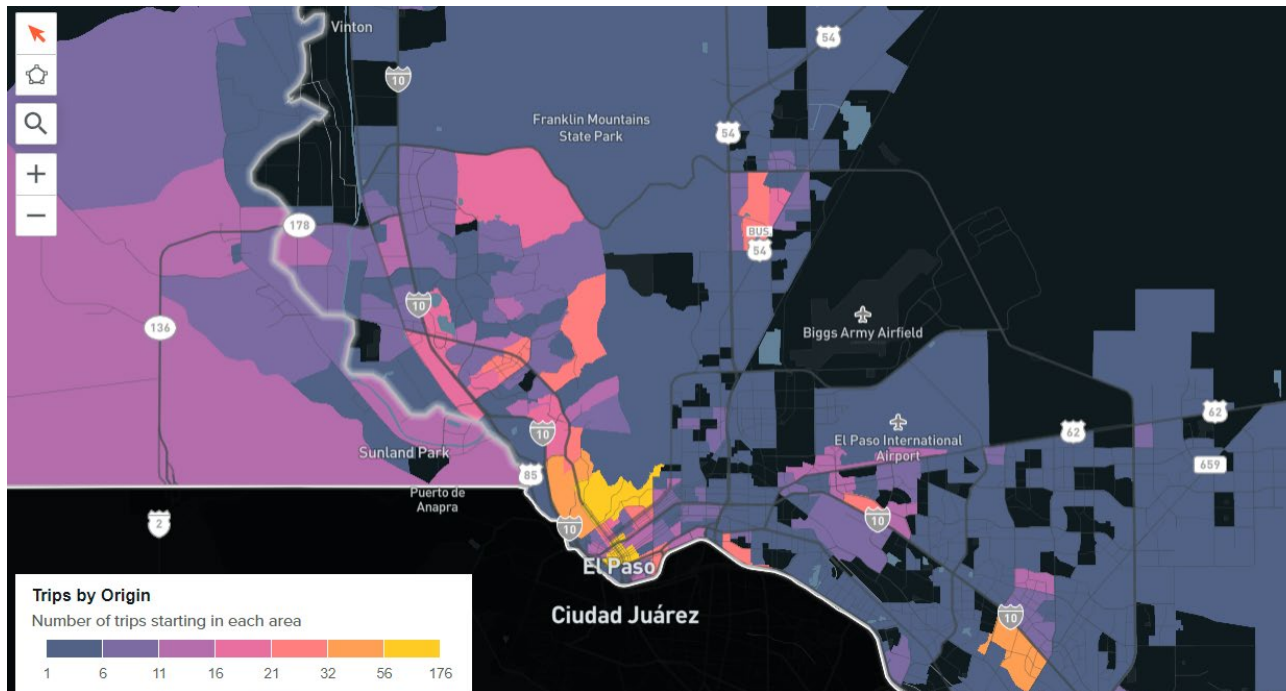
An aerial photograph of El Paso, Texas, taken during sunset. The sun is low on the horizon, casting a warm, golden glow over the city and the surrounding desert landscape. The city lights are beginning to twinkle, and the mountains in the distance are silhouetted against the bright sky. The foreground shows a rocky, desert hillside with some sparse vegetation.

Deductive Change Order: *Replica Travel Demand Model*

WHAT IS REPLICA

Space reserved for the ASL interpreter

Do not move, modify, or add any information on this box.



- **Replica is a nationwide transportation model that simulates actual trip movements to help estimate where and how residents move in our City.**
- **Using a variety of data sources, a complete synthetic population and trip model is developed to help the City make data-informed decisions as it relates to transportation.**

HOW HAS REPLICA BEEN USED

Space reserved for the ASL
interpreter

Do not move, modify, or add
any information on this box.

This data source has been leveraged to help inform:

- **Completed, on-going and current planning studies.**
 - Downtown, Uptown and Surrounding Neighborhoods Plan
 - Onward Alameda Corridor Plan
 - Comprehensive Plan Update
 - Mary Francis Kiesling
 - Memorial Park Master Plan
- **Grant Applications**
 - Deck Feasibility Study
 - Piedras Raise Grant
 - Alameda Raise Grant
- **Project Selection**
 - Street Maintenance Prioritization
 - All Abilities Facility Siting
 - Vision Zero Project Identification

ORIGINAL CONTRACT

Space reserved for the ASL interpreter

Do not move, modify, or add any information on this box.

MOTION MARCH 31, 2020

Motion made by Representative Morgan, seconded by Representative Svarzbein, and unanimously carried to **AWARD** Solicitation 2020-224R Travel Demand Model to Replica, Inc., for an initial three (3) year estimated award of \$510,000.00. The award is to include two (2) additional terms of one (1) year each for an estimated amount of \$200,000.00 per year for a total five (5) year estimated amount of \$910,000.00.

Contract Variance:

New contract no previous contract available for comparison.

Department:	Capital Improvement Department
Award to:	Replica, Inc.
Location:	Overland Park, KS
Item(s):	All
Initial Term:	3 years
Option:	Two (2) additional terms of one (1) year each
Initial Annual Estimated Award:	\$170,000.00
Initial Term Estimated Award:	\$510,000.00 (3 years)
Option year 1:	\$200,000.00
Option year 2:	\$200,000.00
Total Estimated Award:	\$910,000.00 (5 years)
Account No.:	190-38290-4846-580270-PCP20PLANDOCS
Funding Source:	2020 Capital Improvement Plan
District(s):	All

- **Original award of the contract was made on March 31, 2020.**
- **The term was for three (3) years at an annual cost of \$170,000 for a total amount of \$510,000.**

NEW TERMS

- **Notice of our intent to extend was sent to the vendor on September 19, 2023.**
- **Upon notice of our intent to extend, the vendor offered a renewal amount at better terms than proposed in the original contract.**
- **The cost of extending reduced our annual cost from \$200,000 to \$125,000.**

Space reserved for the ASL interpreter

Do not move, modify, or add any information on this box.



REQUESTED COUNCIL ACTION

- **To approve the deductive change order and realize a cost savings of \$75,000.**

Space reserved for the ASL
interpreter

Do not move, modify, or add
any information on this box.