

This text box is to remind you about the ASL translator service. Do NOT add any info in this space.

REMOVE THIS BOX ONCE THE PRESENTATION IS FINALIZED.



CITY OF EL PASO

Sociable City Assessment Plan Update

MISSION



Deliver exceptional services to support a high quality of life and place for our community.

VISION



Develop a vibrant regional economy, safe and beautiful neighborhoods and exceptional recreational, cultural and educational opportunities powered by a high performing government.



VALUES

Integrity, Respect, Excellence,
Accountability, People

This text box is to remind you about the ASL translator service. Do NOT add any info in this space.

REMOVE THIS BOX ONCE THE PRESENTATION IS FINALIZED.

Proposed Action Items

- Noise Ordinance Amendments
- Rideshare Hub
- Ambassador for the Nighttime Economy
- Increase Nighttime Enforcement

This text box is to remind you about the ASL translator service. Do NOT add any info in this space.

REMOVE THIS BOX ONCE THE PRESENTATION IS FINALIZED.



Proposed Noise Ordinance Amendments

- Section 9.40.030 (Sound Level Violations):
 - Subsection B - Clarify language for sound to change “Received” to “Produced”.
 - Subsection D - Specify where the location for measuring noise levels shall be at the property line of the property producing the noise.

This text box is to remind you about the ASL translator service. Do NOT add any info in this space.

REMOVE THIS BOX ONCE THE PRESENTATION IS FINALIZED.

Noise Ordinance Amendments

- Section 9.40.070 (Penalties):
 - Include a civil action with a civil penalty
- Section 9.40.080 (Enforcement):
 - Update which departments can enforce this ordinance
- Section 9.40.090 (Low-Frequency Ambient):
 - Add a new section to address the low-frequency ambient
 - Create a low-frequency dB(C) and provide the specified level of enforcement for any violations

This text box is to remind you about the ASL translator service. Do NOT add any info in this space.

REMOVE THIS BOX ONCE THE PRESENTATION IS FINALIZED.

Ride Share Hub at 200 Baltimore

This text box is to remind you about the ASL translator service. Do NOT add any info in this space.

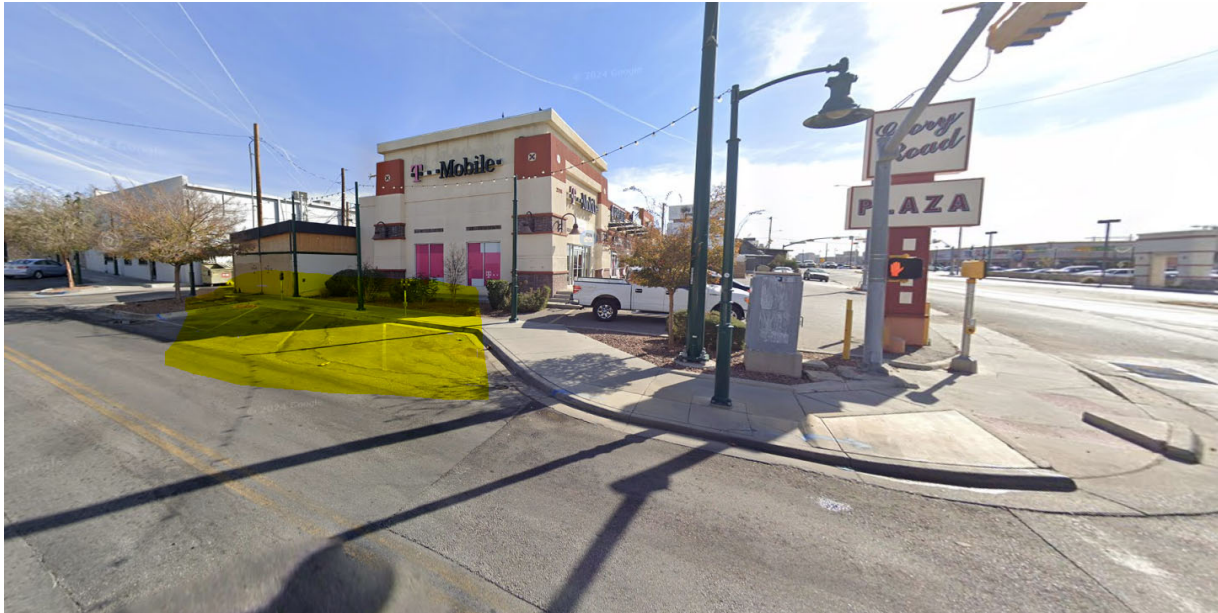
REMOVE THIS BOX ONCE THE PRESENTATION IS FINALIZED.

- Riders and Drivers would benefit by having a designated marked curb-side location for pick-ups and drop-offs.
- This location is centrally located; adjacent to the University of Texas which draws large crowds of patrons for events held all year around.
- This location benefits surrounding businesses for shopping, dining, and entertainment on a 24/7 basis.
- This location would minimize the need for parking in the residential areas.
- A ride share hub at this location would encourage patrons to utilize rideshare options which would curb DWI and Pedestrian Fatalities.

Proposed Rideshare Hub at Mesa and Baltimore

This text box is to remind you about the ASL translator service. Do NOT add any info in this space.

REMOVE THIS BOX ONCE THE PRESENTATION IS FINALIZED.



Increase Staffing to Manage the Nighttime Economy

This position coordinates the necessary resources for balancing public safety, quality of life, and vibrancy with the city.

Some of the duties:

- Oversee nightlife activity and other projects in various neighborhoods and report on trends and impacts.
- Disseminate information using social media platforms.
- Aids neighborhoods with both residential and commercial activity to achieve peaceful and mutually beneficial co-existence.
- Tracks, measures, and reports on data indicating changes or improvements in public safety and economic development.
- Assist with daily operational needs within the Code Enforcement Bureau

This text box is to remind you about the ASL translator service. Do NOT add any info in this space.

REMOVE THIS BOX ONCE THE PRESENTATION IS FINALIZED.

Increased Sound and Parking Enforcement

This text box is to remind you about the ASL translator service. Do NOT add any info in this space.

REMOVE THIS BOX ONCE THE PRESENTATION IS FINALIZED.

- Focus nighttime enforcement efforts around the entertainment areas
- Respond to calls for service from EPPD dispatch
- Provide the ability to tow any illegally parked vehicles by parking enforcement at night

This text box is to remind you about the ASL translator service. Do NOT add any info in this space.

REMOVE THIS BOX ONCE THE PRESENTATION IS FINALIZED.

Questions?