



CITY OF EL PASO

Padel Paso Properties LLC

Chapter 380 Economic Development Program Agreement for
the Construction of Padel Courts in EP

This text box is to remind you about
the ASL translator service. Do NOT
add any info in this space.

REMOVE THIS BOX ONCE THE
PRESENTATION IS FINALIZED.

Padel Paso Properties LLC: Policy Alignment

- Project aligns with the City's 380 Incentive Policy, including capital investment, quality job creation, **target industry** (tourism)
- After incentive value and the cost of government services, the project's expansion provides a **net benefit to the City**.
- **Recommendation:** Move forward with the Chapter 380 Agreement.

This text box is to remind you about the ASL translator service. Do NOT add any info in this space.

REMOVE THIS BOX ONCE THE PRESENTATION IS FINALIZED.

Padel Paso Properties LLC: Project Overview

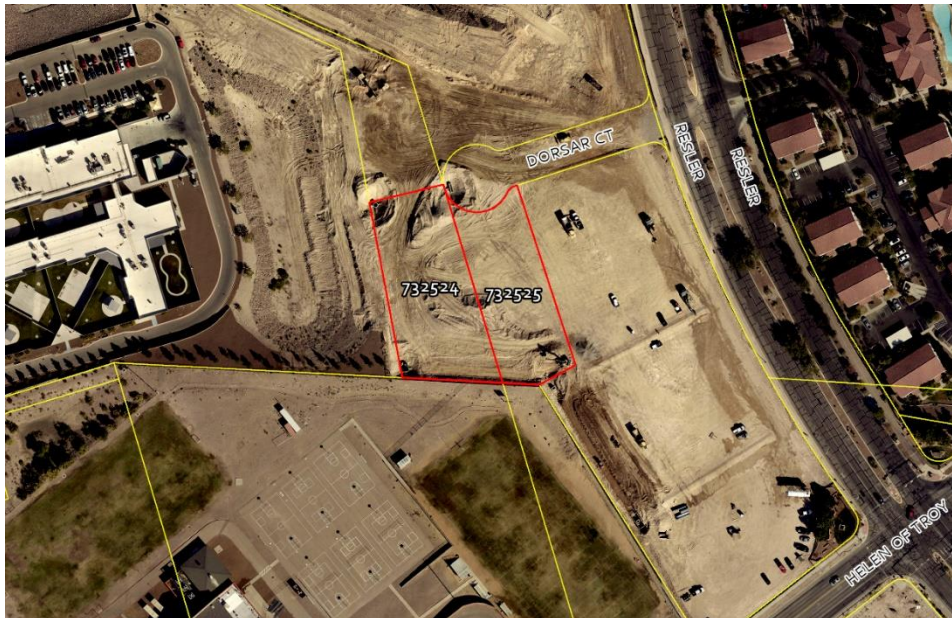
- Local Business Owner with several restaurants throughout the City
- Expanding his portfolio to include more entertainment projects
- Local developer Micca Builders has developed numerous commercial projects The project itself includes:
 - 8 paddleball courts
 - Full service restaurant

This text box is to remind you about the ASL translator service. Do NOT add any info in this space.

REMOVE THIS BOX ONCE THE PRESENTATION IS FINALIZED.

Padel Paso Properties LLC: Site Location

Located near the corner of N. Resler
and Helen of Troy

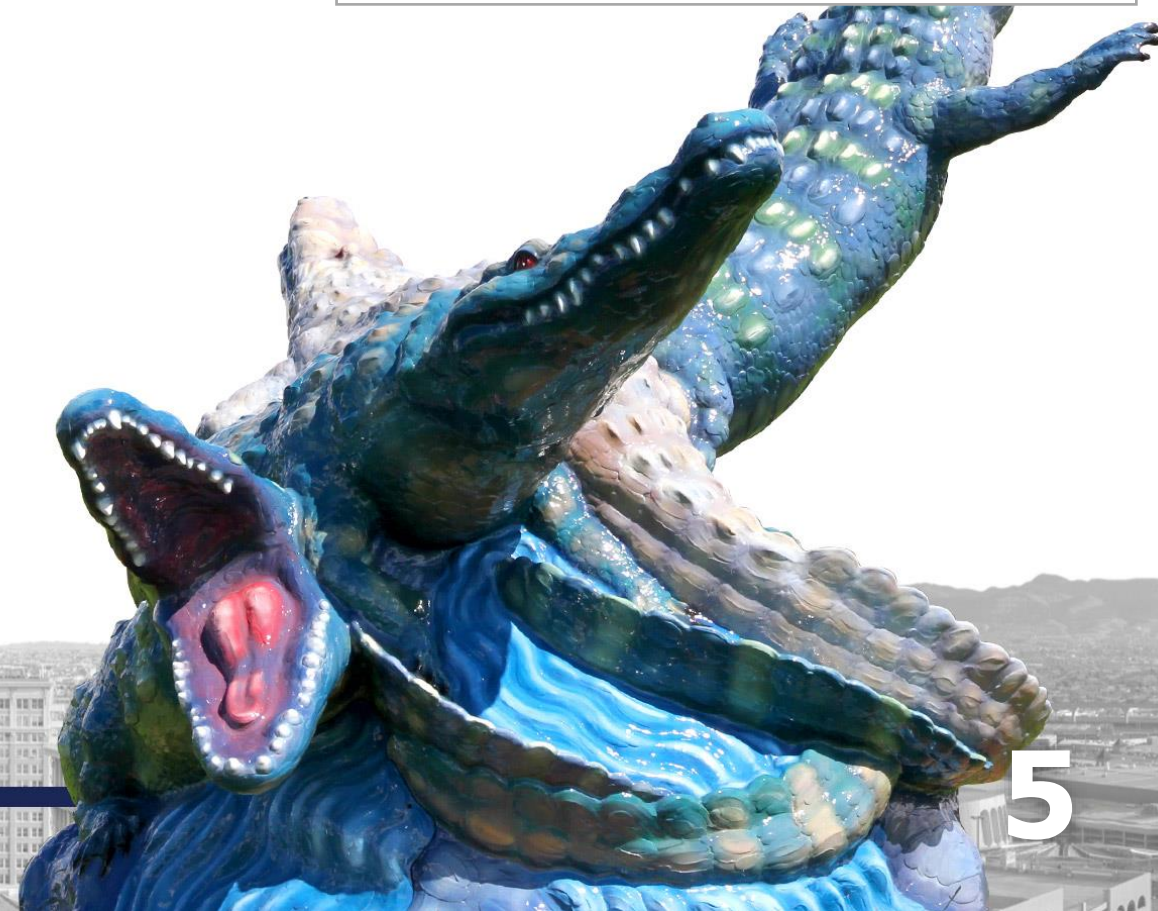


This text box is to remind you about
the ASL translator service. Do NOT
add any info in this space.

REMOVE THIS BOX ONCE THE
PRESENTATION IS FINALIZED.

Architectural rendering of a modern building complex. The main building features a large, flat roof and a prominent entrance area with a covered walkway. To the left, there is a smaller, rectangular structure. The foreground is dominated by a large, paved parking lot with numerous spaces. The surrounding area is landscaped with various trees and shrubs. The overall style is clean and minimalist, typical of contemporary architectural drawings.

REMOVE THIS BOX ONCE THE PRESENTATION IS FINALIZED.



Padel Paso Properties LLC:

Project Description

Capital Investment: \$3,685,000

- Land: \$1,375,000
- New Building Construction: \$1,500,000
- Personal Property: \$810,000

Full-time Jobs Created:

- Create 3 full-time positions and 20+ part-time jobs
- \$58,000 average salary vs. \$37,690 for the El Paso County annual median wage rate (bls.gov)

This text box is to remind you about the ASL translator service. Do NOT add any info in this space.

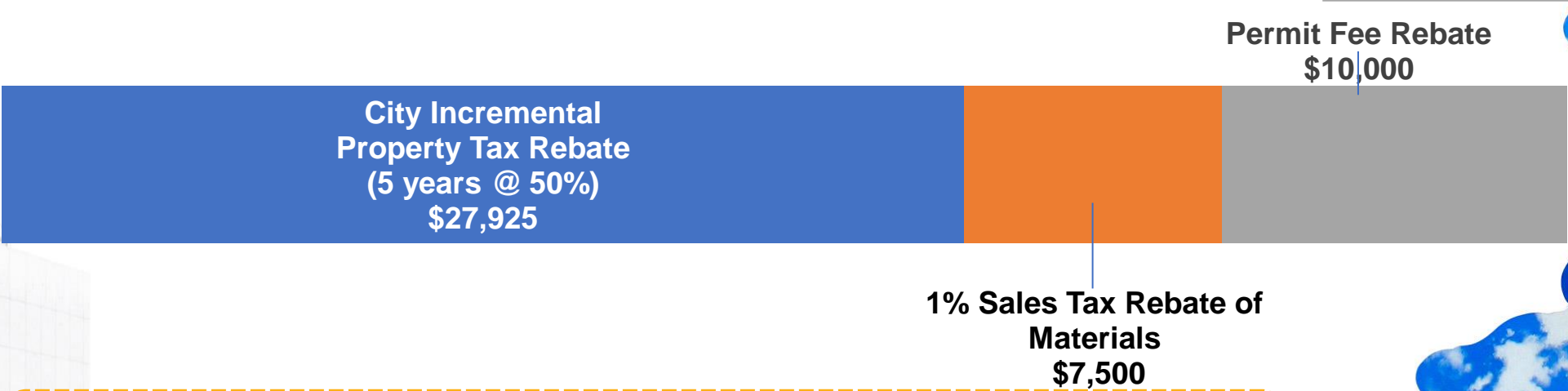
REMOVE THIS BOX ONCE THE PRESENTATION IS FINALIZED.

Padel Paso Properties LLC: Proposed Local Incentive

Proposed City Incentive \$45,425

This text box is to remind you about the ASL translator service. Do NOT add any info in this space.

REMOVE THIS BOX ONCE THE PRESENTATION IS FINALIZED.



Total Proposed Local Incentive - \$45,425 (1.97% of Investment)



Padel Paso Properties LLC: Community Tax Benefit

This text box is to remind you about the ASL translator service. Do NOT add any info in this space.

REMOVE THIS BOX ONCE THE PRESENTATION IS FINALIZED.

City
\$91,829

County
\$69,339

UMC
\$34,682

EPISD
\$45,321

EPCC
\$17,031

Total Net Property Tax Benefit = \$258,202

Padel Paso Properties LLC: Next Steps

This text box is to remind you about the ASL translator service. Do NOT add any info in this space.

REMOVE THIS BOX ONCE THE PRESENTATION IS FINALIZED.

- Proceed with the **Chapter 380 Economic Development Program Agreement** by and between the CITY OF EL PASO, and **Padel Paso Properties LLC** in support for their new project

MISSION



Deliver exceptional services to support a high quality of life and place for our community.

VISION



Develop a vibrant regional economy, safe and beautiful neighborhoods and exceptional recreational, cultural and educational opportunities powered by a high performing government.



VALUES

Integrity, **R**espect, **E**xcellence,
Accountability, **P**eople

This text box is to remind you about the ASL translator service. Do NOT add any info in this space.

REMOVE THIS BOX ONCE THE PRESENTATION IS FINALIZED.