



EL PASO

INTERNATIONAL AIRPORT

Gateway of the Southwest

Terry Sharpe, CM

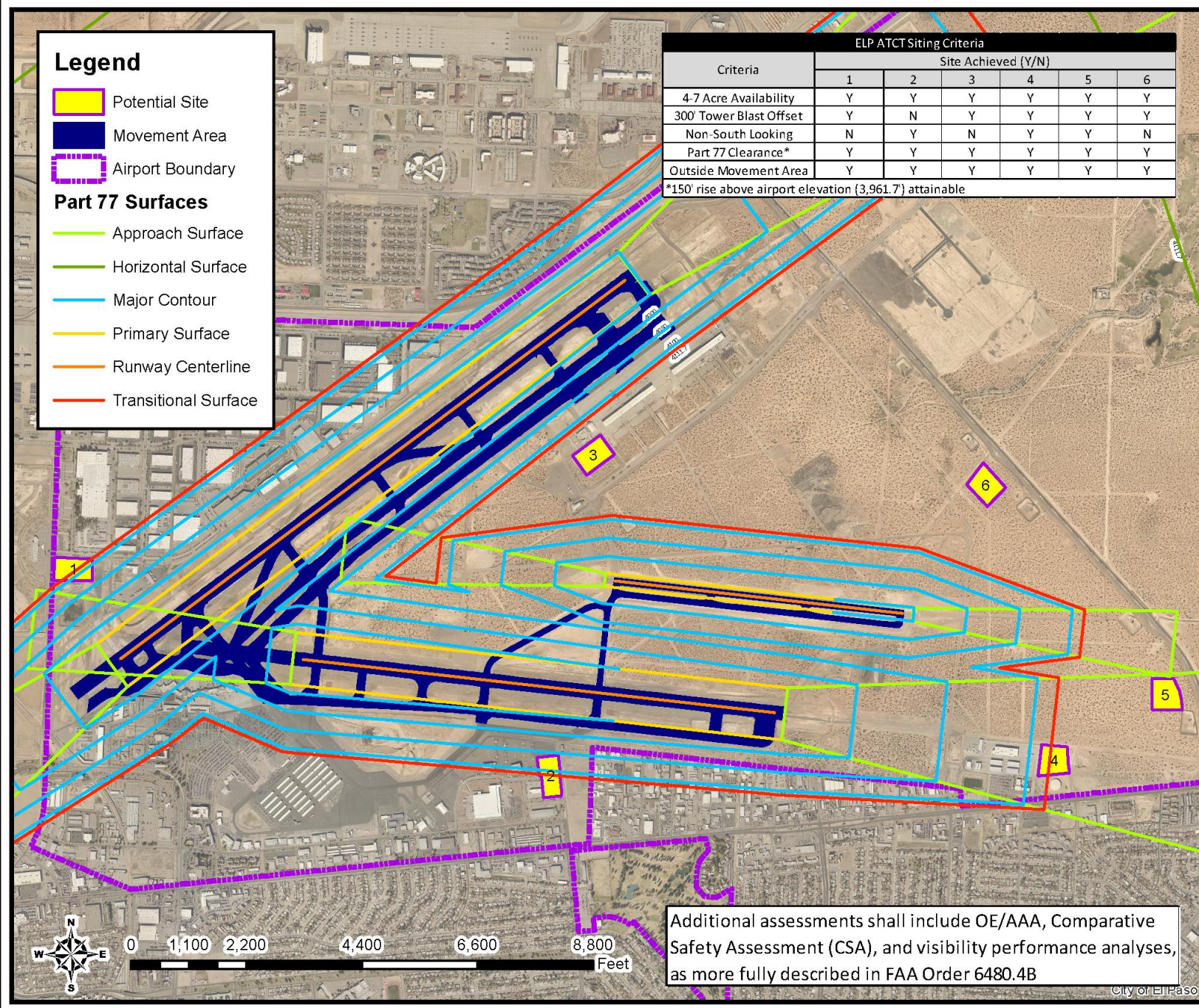
Assistant Director – Aviation Development

ELP ATC

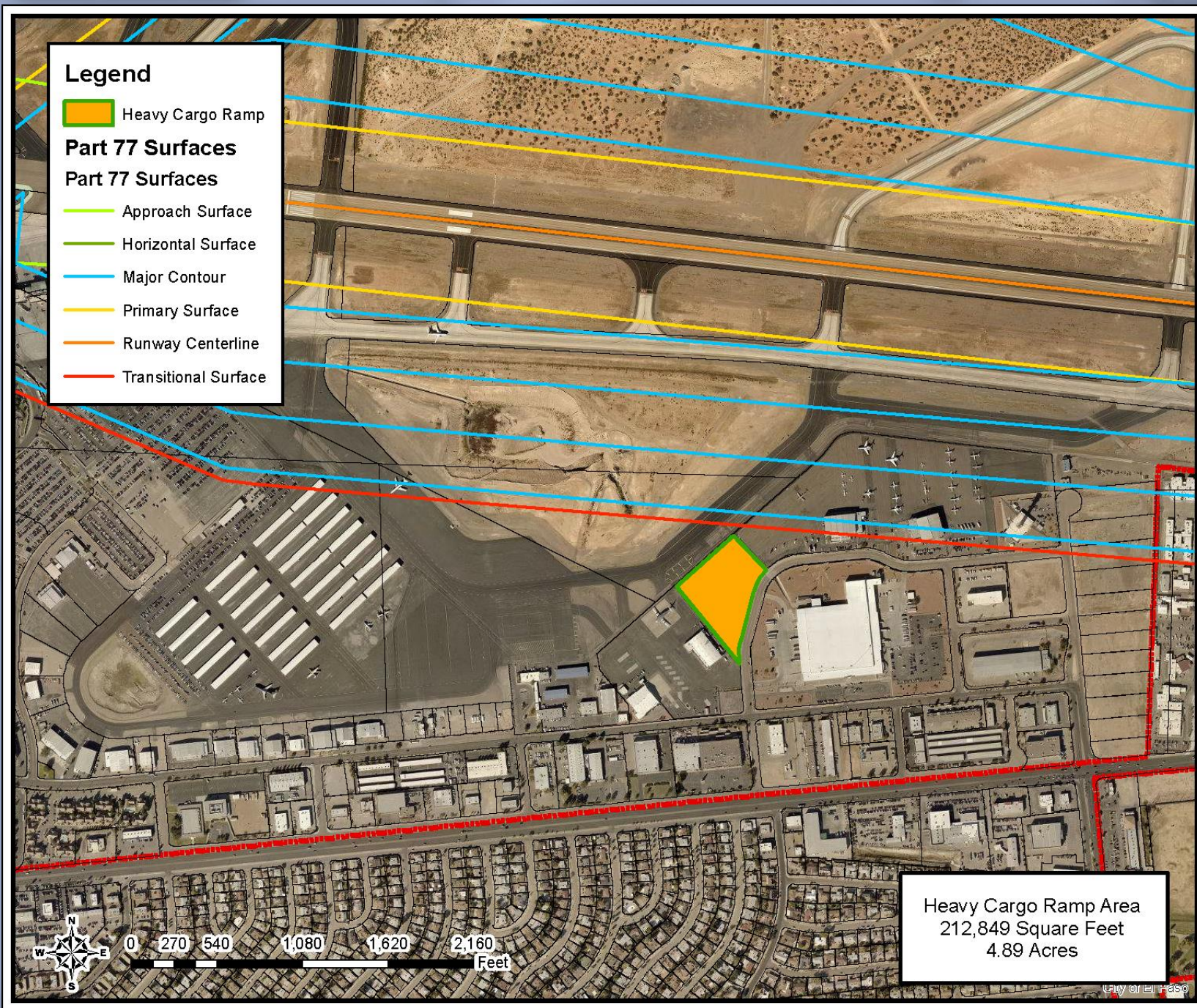


- Built in 1967
- 174 feet
- FAA has indicated that towers of greater than 50 years of age are a replacement priority

EPIA Proposals February 2019



- FAA requested EPIA identify preferred sites
- FAA provided basic criteria by which to evaluate each site
- FAA conducted TERPS assessments and modeling of each site



FAA Alternative June 2019

- FAA selected an alternative site, "Site 11"
- Located on the present EPIA heavy cargo ramp
- To date, no timeline has been announced



EL PASO

INTERNATIONAL AIRPORT

