



ITEM 41

SISD SAC II Annexation

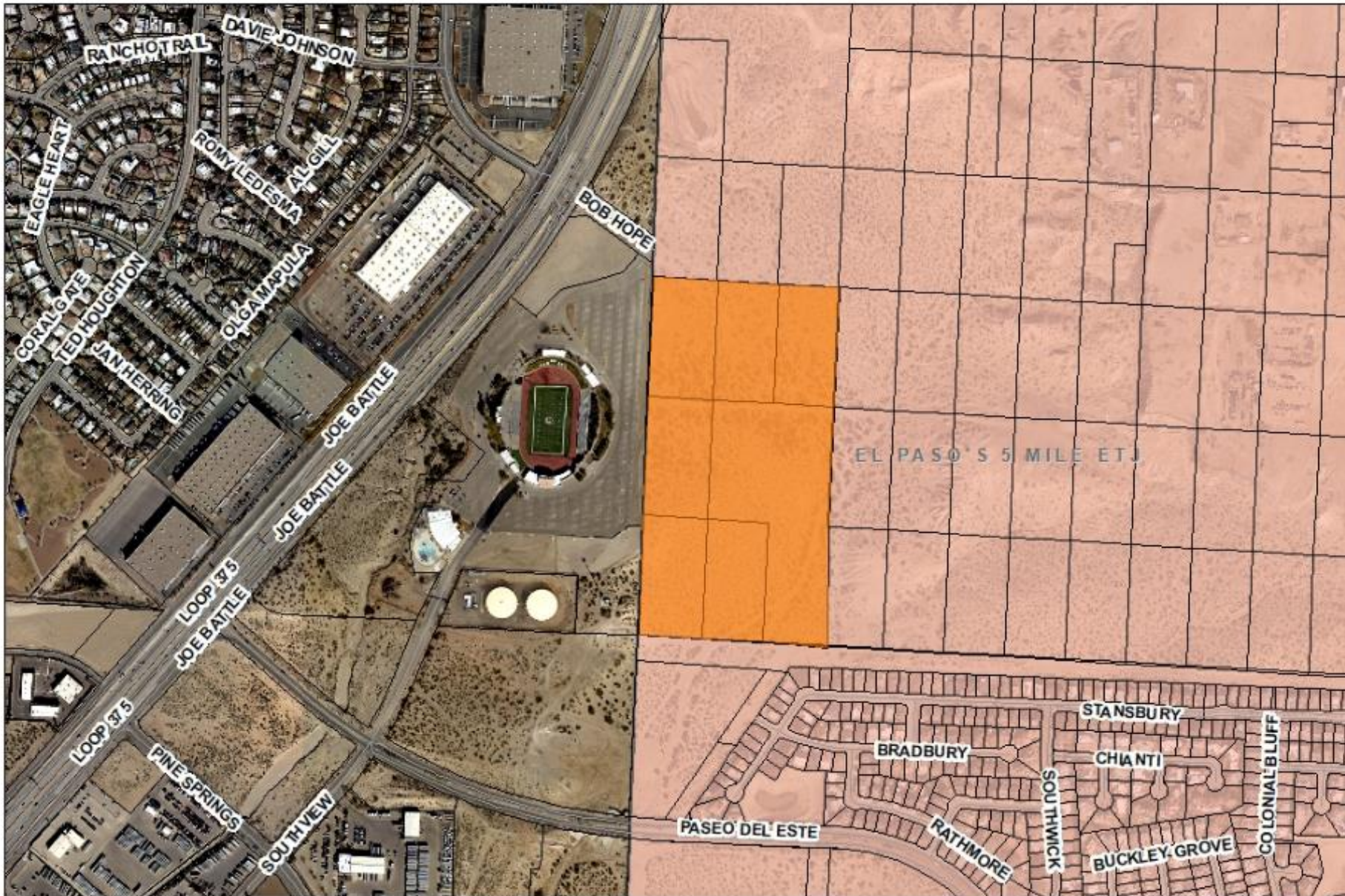
SUAX20-00001

Strategic Goal 3.

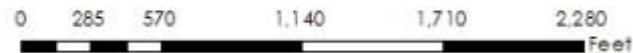
Promote the Visual Image of
El Paso



City Limits



This map is designed for illustrative purposes only. The features depicted here are approximate and more definitive studies may be required to draw accurate conclusions. Enlargements of this map to scales greater than its original scale may result in misinterpretations of the data. The Planning & Inspection Department Planning Division makes no claim to its accuracy or completeness.

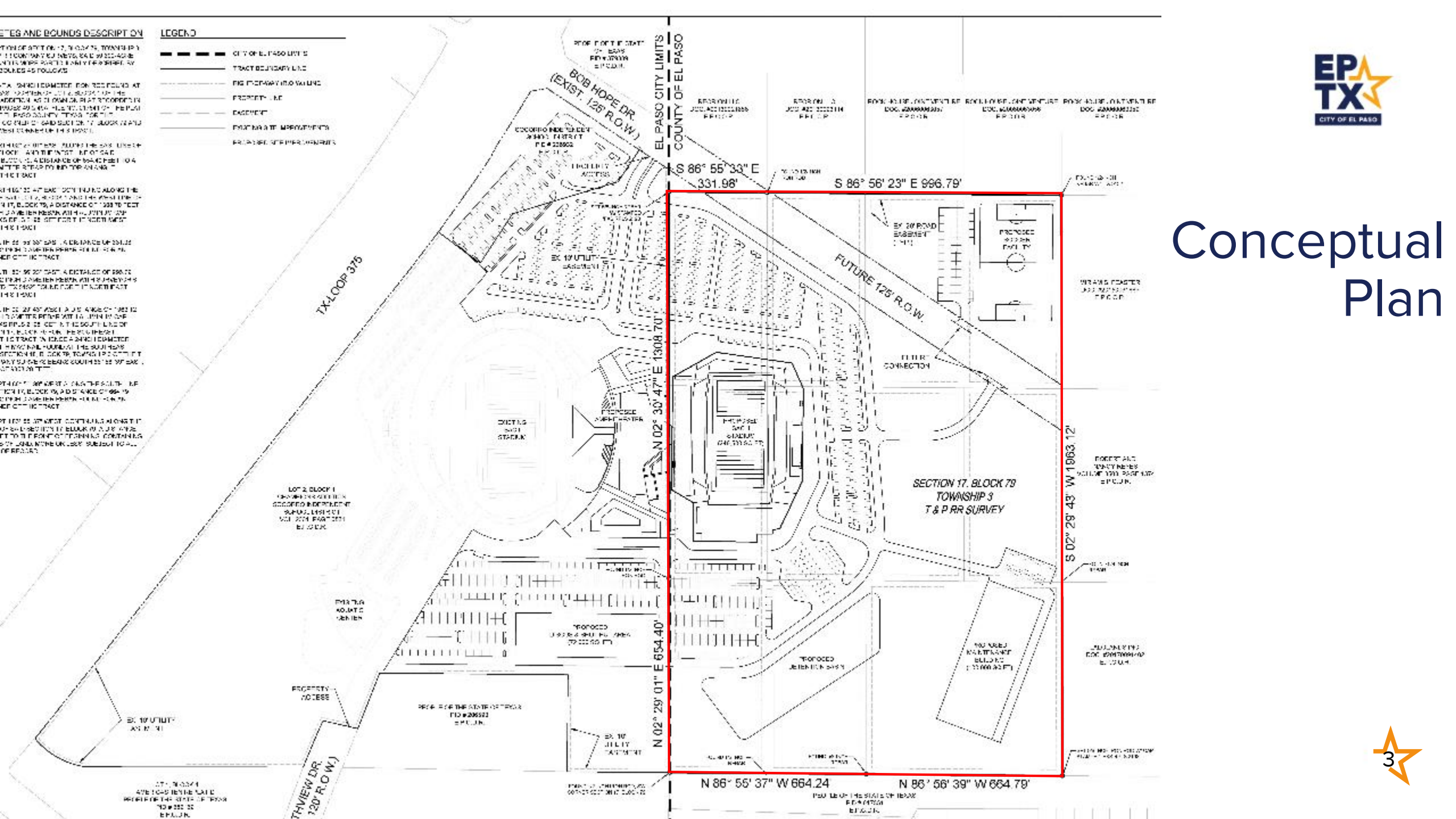


LETES AND BOUNDS DESCRIPTON ON

SECTION 17, BLOCK 79, TOWNSHIP 3 T & P RR SURVEY, R.A.D. 99 322 4218. THE BOUNDARIES OF THIS TRACT ARE AS FOLLOWS:

LEGEND

- CITY OF EL PASO LIMITS
- TRACT BOUNDARY LINE
- HIGHWAY (R.O.W.)
- PROPERTY LINE
- EASEMENT
- FUTURE SITE IMPROVEMENTS
- EXISTING SITE IMPROVEMENTS



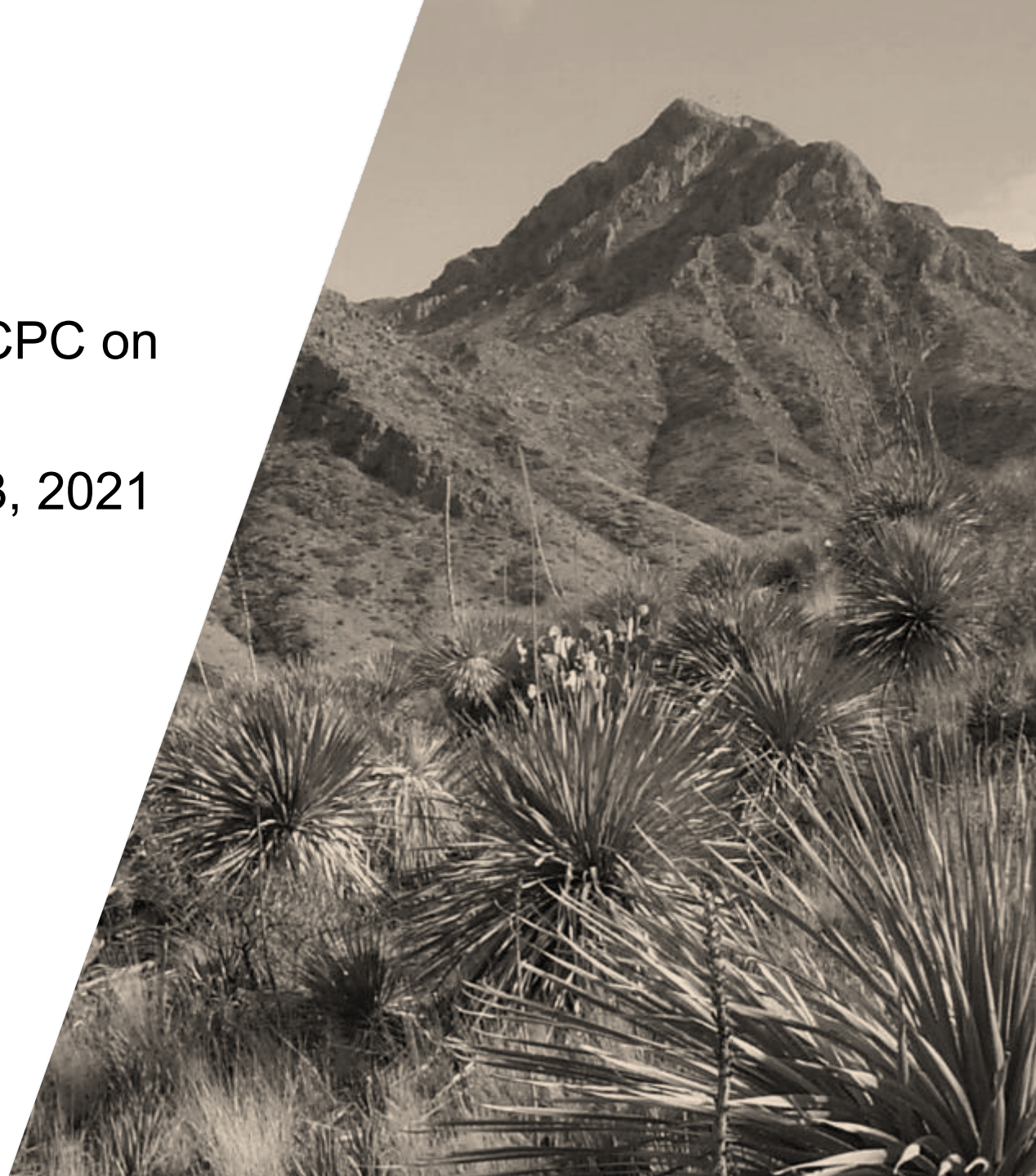
Conceptual Plan



Subject Property

Case History

- Annexation Agreement approved by CPC on June 3, 2021
- Approved by City Council on August 3, 2021





Recommendation

- Staff recommends approval of the annexation request
- CPC approved unanimously on August 26, 2021



Mission

Deliver exceptional services to support a high quality of life and place for our community



Vision

Develop a vibrant regional economy, safe and beautiful neighborhoods and exceptional recreational, cultural and educational opportunities powered by a high performing government



Values

Integrity, Respect, Excellence, Accountability, People